

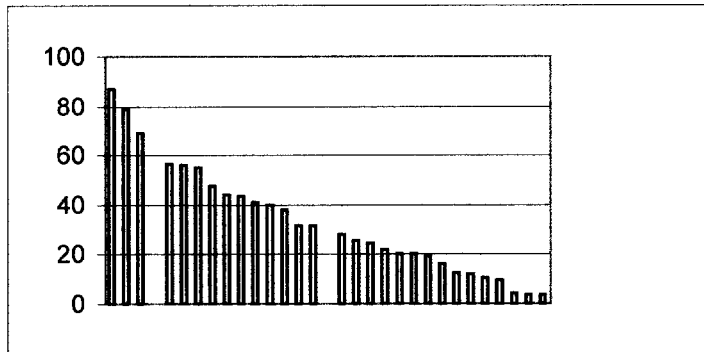
Appendix 2

Source data summaries for individual information components

I.1.a. SSRS PRIORITIZATION - TOTAL HEALTHY STOCK SIGNIFICANCE (SASSI + ESA)

Category	Y-axis points	
Favorable	10	>67%
Medium	5	33%-67%
Unfavorable	0	<33%

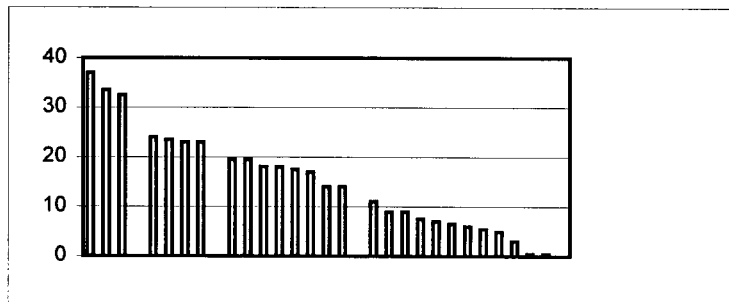
WRIA	Value	Score
20 Sol Duc - Hoh	87	10
21 Queets - Quinault	79	10
22 Lower Chehalis	69	10
15 Kitsap	56.5	5
7 Snohomish	56	5
16 Hood Canal	55	5
3 Lower Skagit - Samish	47.5	5
19 Lyre - Hoko	44	5
24 Willapa	43.5	5
14 Kennedy-Goldsbgh.	41	5
10 Puyallup	40	5
5 Stillaguamish	38	5
9 Duamish-Green	31.5	5
23 Upper Chehalis	31.5	5
11 Nisqually	28	0
1 Nooksack	25.5	0
18 Elwha - Dungeness	24.5	0
13 Deschutes	22	0
17 Quilcene	20	0
27 Lewis - Kalama	20	0
25 Grays - Eloc.	19	0
8 Cedar-Sammamish	16	0
26 Cowlitz	12.5	0
12 Chambers-Clover	12	0
29 Wind - White Sal.	10.5	0
28 Salmon - Washougal	9.5	0
4 Upper Skagit	4	0
2 San Juan	3.5	0
6 Island	3.5	0



I.1.b. SSRS PRIORITIZATION - TOTAL UNHEALTHY STOCK SIGNIFICANCE (SASSI + ESA)

Category	X-axis points	
Favorable	10	<33%
Medium	5	33%-67%
Unfavorable	0	>67%

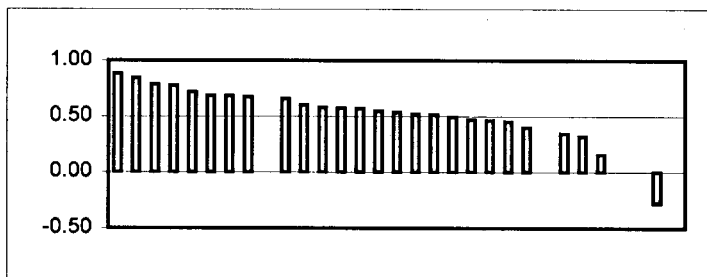
WRIA	Value	Score
25 Grays - Eloc.	37	0
18 Elwha - Dungeness	33.5	0
26 Cowlitz	32.5	0
27 Lewis - Kalama	24	5
3 Lower Skagit - Samish	23.5	5
16 Hood Canal	23	5
17 Quilcene	23	5
1 Nooksack	0	5
15 Kitsap	19.5	5
28 Salmon - Washougal	19.5	5
20 Sol Duc - Hoh	18	5
21 Queets - Quinault	18	5
29 Wind - White Sal.	17.5	5
8 Cedar-Sammamish	17	5
5 Stillaguamish	14	5
7 Snohomish	14	5
10 Puyallup	11	10
19 Lyre - Hoko	9	10
22 Lower Chehalis	9	10
9 Duamish-Green	7.5	10
11 Nisqually	7	10
24 Willapa	6.5	10
14 Kennedy-Goldsbgh.	6	10
23 Upper Chehalis	5.5	10
13 Deschutes	5	10
4 Upper Skagit	3	10
2 San Juan	0.5	10
6 Island	0.5	10
12 Chambers-Clover	0	10



I.1.c. SSRS PRIORITIZATION - TOTAL STOCK ORIGIN (SASSI)

Category	Y-axis points	
Favorable	10	>67%
Medium	5	33%-67%
Unfavorable	0	<33%

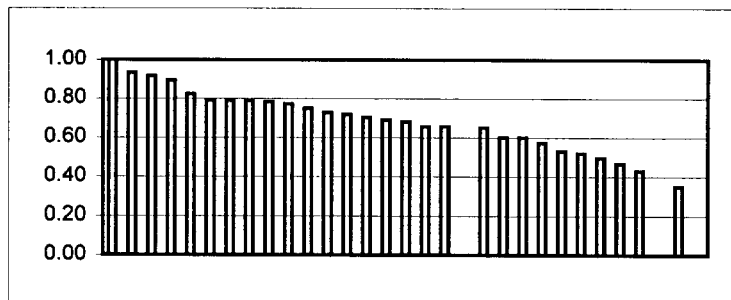
WRIA	Value	Scaled	Score
4 Upper Skagit	75	0.88	10
24 Willapa	63	0.84	10
28 Salmon - Washougal	43	0.78	10
20 Sol Duc - Hoh	151	0.77	10
21 Queets - Quinault	118	0.72	10
5 Stillaguamish	41	0.68	10
11 Nisqually	17	0.68	10
14 Kennedy-Goldsbgh.	57	0.67	10
1 Nooksack	49	0.65	5
27 Lewis - Kalama	42	0.60	5
22 Lower Chehalis	78	0.58	5
7 Snohomish	54	0.57	5
19 Lyre - Hoko	51	0.57	5
17 Quilcene	30	0.55	5
10 Puyallup	32	0.53	5
18 Elwha - Dungeness	39	0.52	5
23 Upper Chehalis	18	0.51	5
25 Grays - Eloc.	47	0.49	5
12 Chambers-Clover	7	0.47	5
16 Hood Canal	53	0.46	5
15 Kitsap	45	0.45	5
26 Cowlitz	28	0.40	5
3 Lower Skagit - Samish	12	0.34	0
29 Wind - White Sal.	19	0.32	0
8 Cedar-Sammamish	7	0.16	0
2 San Juan	0	0.00	0
9 Duamish-Green	0	0.00	0
13 Deschutes	-7	-0.28	0
6 Island	No Data		



I.1.d. SSRS PRIORITIZATION - TOTAL PRODUCTION TYPE OF NATURAL SPAWNERS (SASSI)

Category	Y-axis points
Favorable	10
Medium	5
Unfavorable	0

WRIA	Value	Scaled	Score
2 San Juan	10	1.00	10
5 Stillaguamish	56	0.93	10
7 Snohomish	87	0.92	10
24 Willapa	67	0.89	10
8 Cedar-Sammamish	37	0.82	10
19 Lyre - Hoko	71	0.79	10
4 Upper Skagit	67	0.79	10
1 Nooksack	59	0.79	10
28 Salmon - Washougal	43	0.78	10
23 Upper Chehalis	27	0.77	10
20 Sol Duc - Hoh	146	0.75	10
21 Queets - Quinault	120	0.73	10
14 Kennedy-Goldsbgh.	61	0.72	10
22 Lower Chehalis	95	0.70	10
17 Quilcene	38	0.69	10
11 Nisqually	17	0.68	10
3 Lower Skagit - Samish	23	0.66	10
27 Lewis - Kalama	46	0.66	10
10 Puyallup	39	0.65	5
16 Hood Canal	69	0.60	5
29 Wind - White Sal.	36	0.60	5
18 Elwha - Dungeness	43	0.57	5
15 Kitsap	53	0.53	5
13 Deschutes	13	0.52	5
25 Grays - Eloc.	47	0.49	5
12 Chambers-Clover	7	0.47	5
26 Cowlitz	30	0.43	5
9 Duamish-Green	14	0.35	0
6 Island	No Data		



I.1.e. SSRS PRIORITIZATION - TOTAL GENETIC DIVERSITY VALUE

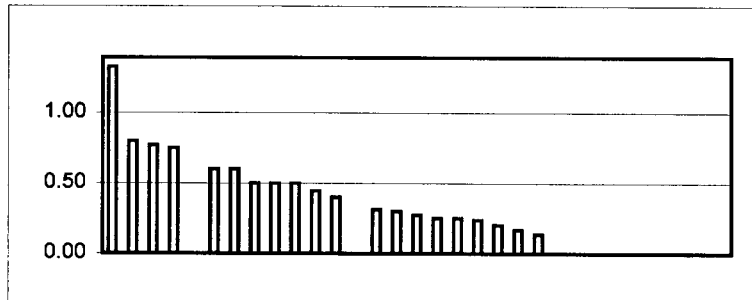
Category	X-axis points
Favorable	10
Medium	5
Unfavorable	0

WRIA	Score
1 Nooksack	10
3 Lower Skagit - Samish	10
4 Upper Skagit	10
5 Stillaguamish	10
7 Snohomish	10
8 Cedar-Sammamish	10
10 Puyallup	10
11 Nisqually	10
14 Kennedy-Goldsbgh.	10
15 Kitsap	10
16 Hood Canal	10
17 Quilcene	10
18 Elwha - Dungeness	10
19 Lyre - Hoko	10
20 Sol Duc - Hoh	10
21 Queets - Quinault	10
22 Lower Chehalis	10
23 Upper Chehalis	10
27 Lewis - Kalama	10
28 Salmon - Washougal	10
29 Wind - White Sal.	10
9 Duamish-Green	5
12 Chambers-Clover	5
13 Deschutes	5
24 Willapa	5
25 Grays - Eloc.	5
26 Cowlitz	5
2 San Juan	
6 Island	

I.2.a. SSRS PRIORITIZATION - TOTAL PROPORTION STOCKS OVERFISHED (WSP)

Category	Y-axis points
Favorable	10
Medium	5
Unfavorable	0

WRIA	Value	Scaled	Score
24 Willapa	12	1.33	0
26 Cowlitz	8	0.80	0
25 Grays - Eloc.	10	0.77	0
27 Lewis - Kalama	6	0.75	0
15 Kitsap	9	0.60	5
28 Salmon - Washougal	3	0.60	5
9 Duamish-Green	3	0.50	5
11 Nisqually	2	0.50	5
12 Chambers-Clover	1	0.50	5
10 Puyallup	4	0.44	5
29 Wind - White Sal.	2	0.40	5
16 Hood Canal	5	0.31	10
18 Elwha - Dungeness	3	0.30	10
14 Kennedy-Goldsbgh.	3	0.27	10
8 Cedar-Sammamish	2	0.25	10
13 Deschutes	1	0.25	10
20 Sol Duc - Hoh	5	0.24	10
1 Nooksack	2	0.20	10
3 Lower Skagit - Samish	1	0.17	10
21 Queets - Quinault	3	0.14	10
2 San Juan	0	0.00	10
4 Upper Skagit	0	0.00	10
5 Stillaguamish	0	0.00	10
7 Snohomish	0	0.00	10
17 Quilcene	0	0.00	10
19 Lyre - Hoko	0	0.00	10
22 Lower Chehalis	0	0.00	10
23 Upper Chehalis	0	0.00	10
6 Island	No Data		



I.2.b. SSRS PRIORITIZATION - TOTAL ESCAPEMENT GOALS - ADEQUACY OF SPAWNERS

Category	X-axis points
Favorable	10
Medium	5
Unfavorable	0

WRIA	Score
2 San Juan	10
22 Lower Chehalis	10
3 Lower Skagit - Samish	5
4 Upper Skagit	5
5 Stillaguamish	5
7 Snohomish	5
14 Kennedy-Goldsbgh.	5
15 Kitsap	5
16 Hood Canal	5
17 Quilcene	5
19 Lyre - Hoko	5
20 Sol Duc - Hoh	5
21 Queets - Quinault	5
23 Upper Chehalis	5
1 Nocksack	0
8 Cedar-Sammamish	0
9 Duamish-Green	0
10 Puyallup	0
11 Nisqually	0
12 Chambers-Clover	0
13 Deschutes	0
18 Elwha - Dungeness	0
24 Willapa	0
25 Grays - Eloc.	0
26 Cowlitz	0
27 Lewis - Kalama	0
28 Salmon - Washougal	0
29 Wind - White Sal.	0
6 Island	

I.2.c. SSRS PRIORITIZATION - TOTAL HATCHERY FISH IDENTIFICATION

Category	X-axis points
Favorable	10
Medium	5
Unfavorable	0

WRIA	Score
22 Lower Chehalis	5
23 Upper Chehalis	5
24 Willapa	5
25 Grays - Eloc.	5
26 Cowlitz	5
27 Lewis - Kalama	5
28 Salmon - Washougal	5
29 Wind - White Sal.	5
1 Nooksack	0
2 San Juan	0
3 Lower Skagit - Samish	0
4 Upper Skagit	0
5 Stillaguamish	0
6 Island	0
7 Snohomish	0
8 Cedar-Sammamish	0
9 Duamish-Green	0
10 Puyallup	0
11 Nisqually	0
12 Chambers-Clover	0
13 Deschutes	0
14 Kennedy-Goldsbgh.	0
15 Kitsap	0
16 Hood Canal	0
17 Quilcene	0
18 Elwha - Dungeness	0
19 Lyre - Hoko	0
20 Sol Duc - Hoh	0
21 Queets - Quinault	0

I.2.d. SSRS PRIORITIZATION - TOTAL NATURAL JUVENILE PRODUCTION ASSESSMENT

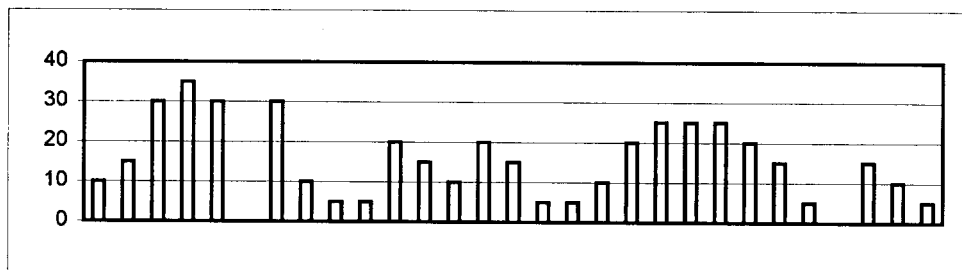
Category	X-axis points
Favorable	10
Medium	5
Unfavorable	0

WRIA	Score
3 Lower Skagit - Samish	10
4 Upper Skagit	10
8 Cedar-Sammamish	10
13 Deschutes	10
15 Kitsap	10
17 Quilcene	10
18 Elwha - Dungeness	10
19 Lyre - Hoko	10
21 Queets - Quinault	10
22 Lower Chehalis	10
23 Upper Chehalis	10
27 Lewis - Kalama	10
29 Wind - White Sal.	10
5 Stillaguamish	5
7 Snohomish	5
9 Duamish-Green	5
10 Puyallup	5
11 Nisqually	5
12 Chambers-Clover	5
14 Kennedy-Goldsbgh.	5
16 Hood Canal	5
24 Willapa	5
25 Grays - Eloc.	5
28 Salmon - Washougal	5
1 Nooksack	0
2 San Juan	0
6 Island	0
20 Sol Duc - Hoh	0
26 Cowlitz	0

I.2.e. SSRS PRIORITIZATION - RATIO OF HATCHERY TO NATURAL PRODUCTION

Category	X-axis points
Hatchery < 2X Natural	10
Hatchery = Natural	5
Hatchery > 2X Natural	0

WRIA	Hatchery Ratio Chinook	Hatchery Ratio Coho	Hatchery Ratio Chum	Hatchery Ratio Steelhead	Hatchery Ratio Sum	X-axis points
1 Nooksack	0	0	5	5	10	0
2 San Juan	0	5	5	5	15	5
3 Lower Skagit - Samish	5	10	10	5	30	10
4 Upper Skagit	10	10	10	5	35	10
5 Stillaguamish	5	10	10	5	30	10
6 Island						
7 Snohomish	5	10	10	5	30	10
8 Cedar-Sammamish	0	0		10	10	0
9 Duamish-Green	0	0	0	5	5	0
10 Puyallup	0	0	0	5	5	0
11 Nisqually	0	0	10	10	20	5
12 Chambers-Clover	0	0	10	5	15	5
13 Deschutes	0	10		0	10	0
14 Kennedy-Goldsbgh.	5	0	10	5	20	5
15 Kitsap	0	0	10	5	15	5
16 Hood Canal	0	0	0	5	5	0
17 Quilcene	0	0	0	5	5	0
18 Elwha - Dungeness	0	0	5	5	10	0
19 Lyre - Hoko	0	5	10	5	20	5
20 Sol Duc - Hoh	5	5	10	5	25	10
21 Queets - Quinault	5	5	10	5	25	10
22 Lower Chehalis	5	5	10	5	25	10
23 Upper Chehalis	5	5	10	0	20	5
24 Willapa	0	0	10	5	15	5
25 Grays - Eloc.	0	0	5	0	5	0
26 Cowlitz	0	0		0	0	0
27 Lewis - Kalama	5	5		5	15	5
28 Salmon - Washougal	0	0	10	0	10	0
29 Wind - White Sal.	0	0		5	5	0



II.1.a. SSRS PRIORITIZATION - TOTAL ESTUARY DEVELOPMENT

Category	X-axis points
Favorable	10
Medium	5
Unfavorable	0

WRIA	Estuary Development
1 Nooksack	10
2 San Juan	10
5 Stillaguamish	10
6 Island	10
11 Nisqually	10
16 Hood Canal	10
19 Lyre - Hoko	10
20 Sol Duc - Hoh	10
21 Queets - Quinault	10
22 Lower Chehalis	10
23 Upper Chehalis	10
12 Chambers-Clover	5
14 Kennedy-Goldsbgh.	5
15 Kitsap	5
17 Quilcene	5
18 Elwha - Dungeness	5
24 Willapa	5
3 Lower Skagit - Samish	0
4 Upper Skagit	0
7 Snohomish	0
8 Cedar-Sammamish	0
9 Duamish-Green	0
10 Puyallup	0
13 Deschutes	0
25 Grays - Eloc.	0
26 Cowlitz	0
27 Lewis - Kalama	0
28 Salmon - Washougal	0
29 Wind - White Sal.	0

II.1.b. SSRS PRIORITIZATION - NEAR-SHORE MARINE CONDITION

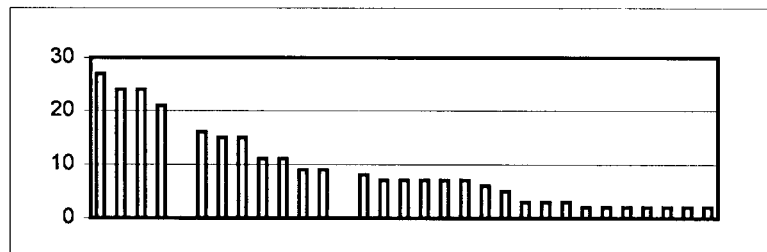
Category	Y-axis points
Favorable	10
Medium	5
Unfavorable	0

WRIA	Marine Shoreline
1 Nooksack	10
2 San Juan	10
18 Elwha - Dungeness	10
19 Lyre - Hoko	10
20 Sol Duc - Hoh	10
21 Queets - Quinault	10
3 Lower Skagit - Samish	5
4 Upper Skagit	5
5 Stillaguamish	5
6 Island	5
7 Snohomish	5
11 Nisqually	5
12 Chambers-Clover	5
13 Deschutes	5
14 Kennedy-Goldsbgh.	5
15 Kitsap	5
16 Hood Canal	5
17 Quilcene	5
22 Lower Chehalis	5
23 Upper Chehalis	5
24 Willapa	5
25 Grays - Eloc.	5
26 Cowlitz	5
27 Lewis - Kalama	5
28 Salmon - Washougal	5
29 Wind - White Sal.	5
8 Cedar-Sammamish	0
9 Duamish-Green	0
10 Puyallup	0

II.1.c. SSRS PRIORITIZATION - MARINE FORAGE FISH

Category	X-axis points	
Favorable	10	>67%
Medium	5	33%-67%
Unfavorable	0	<33%

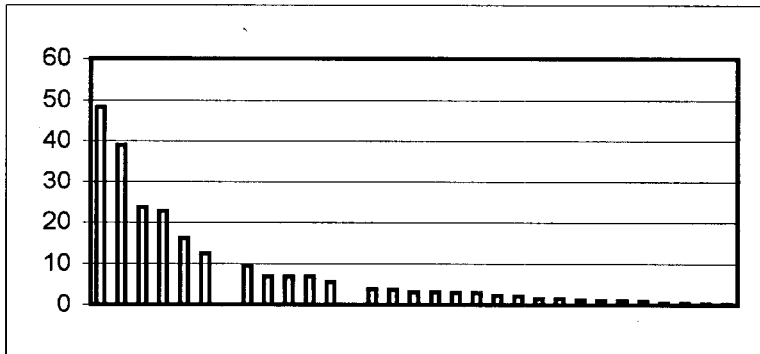
WRIA	Value	Marine Forage Fish
15 Kitsap	27	10
3 Lower Skagit - Samish	24	10
4 Upper Skagit	24	10
17 Quilcene	21	10
6 Island	16	5
1 Nooksack	15	5
2 San Juan	15	5
5 Stillaguamish	11	5
7 Snohomish	11	5
8 Cedar-Sammamish	9	5
9 Duamish-Green	9	5
24 Willapa	8	0
10 Puyallup	7	0
11 Nisqually	7	0
12 Chambers-Clover	7	0
13 Deschutes	7	0
14 Kennedy-Goldsbgh.	7	0
18 Elwha - Dungeness	6	0
16 Hood Canal	5	0
22 Lower Chehalis	3	0
23 Upper Chehalis	3	0
19 Lyre - Hoko	3	0
25 Grays - Eloc.	2	0
26 Cowlitz	2	0
27 Lewis - Kalama	2	0
28 Salmon - Washougal	2	0
29 Wind - White Sal.	2	0
20 Sol Duc - Hoh	2	0
21 Queets - Quinault	2	0



II.1.d. SSRS PRIORITIZATION - TOTAL URBAN DEVELOPMENT %

Category	Y-axis points
Favorable	10
Medium	5
Unfavorable	0

WRIA	Value	Score
12 Chambers-Clover	48.3	0
8 Cedar-Sammamish	38.9	0
9 Duamish-Green	23.6	0
28 Salmon - Washougal	22.6	0
13 Deschutes	16.2	0
15 Kitsap	12.5	0
<hr/>		
10 Puyallup	9.4	5
6 Island	7	5
14 Kennedy-Goldsbgh.	7	5
3 Lower Skagit - Samis	6.9	5
7 Snohomish	5.6	5
<hr/>		
1 Nooksack	3.9	10
25 Grays - Eloc.	3.7	10
5 Stillaguamish	3.1	10
17 Quilcene	3.1	10
27 Lewis - Kalama	3	10
11 Nisqually	2.9	10
22 Lower Chehalis	2.3	10
23 Upper Chehalis	2.2	10
18 Elwha - Dungeness	1.6	10
24 Willapa	1.6	10
26 Cowlitz	1.3	10
2 San Juan	1.1	10
29 Wind - White Sal.	1.1	10
16 Hood Canal	1	10
20 Sol Duc - Hoh	0.5	10
21 Queets - Quinault	0.5	10
4 Upper Skagit	0.3	10
19 Lyre - Hoko	0.3	10



II.1.e. SSRS PRIORITIZATION - HUMAN POPULATION GROWTH

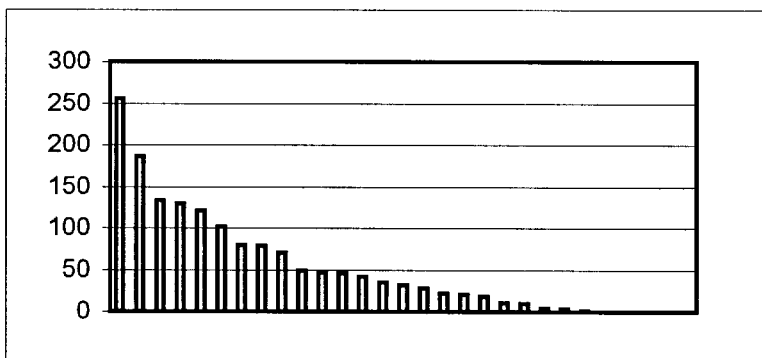
Category	X-axis points
Favorable	10
Medium	5
Unfavorable	0

WRIA	Human Population Growth
2 San Juan	10
4 Upper Skagit	10
16 Hood Canal	10
19 Lyre - Hoko	10
20 Sol Duc - Hoh	10
21 Queets - Quinault	10
24 Willapa	10
29 Wind - White Sal.	10
3 Lower Skagit - Samish	5
5 Stillaguamish	5
6 Island	5
11 Nisqually	5
14 Kennedy-Goldsbgh.	5
17 Quilcene	5
18 Elwha - Dungeness	5
22 Lower Chehalis	5
23 Upper Chehalis	5
25 Grays - Eloc.	5
26 Cowlitz	5
27 Lewis - Kalama	5
1 Nooksack	0
7 Snohomish	0
8 Cedar-Sammamish	0
9 Duamish-Green	0
10 Puyallup	0
12 Chambers-Clover	0
13 Deschutes	0
15 Kitsap	0
28 Salmon - Washougal	0

II.1.f. SSRS PRIORITIZATION - TOTAL STREAM WATER QUALITY - 303d RESPONSE MILES

Category X-axis points

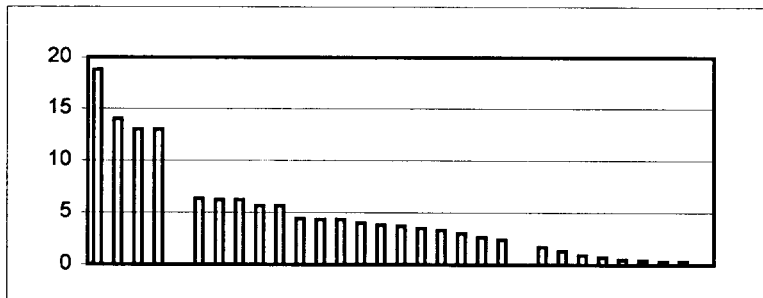
WRIA	Value	Score
20 Sol Duc - Hoh	255.48	0
7 Snohomish	186.49	0
26 Cowlitz	132.69	2
24 Willapa	128.98	2
22 Lower Chehalis	120.99	2
1 Nooksack	101.41	2
9 Duamish-Green	79.36	4
10 Puyallup	78.66	4
5 Stillaguamish	70.03	4
8 Cedar-Sammamish	49.04	6
25 Grays - Eloc.	46.38	6
21 Queets - Quinalt	45.79	6
19 Lyre - Hoko	42.23	6
27 Lewis - Kalama	34.9	6
28 Salmon - Washougal	32.28	6
29 Wind - White Sal.	27.94	6
17 Quilcene	22.18	6
12 Chambers-Clover	20.65	6
18 Elwha - Dungeness	18.18	6
23 Upper Chehalis	10.95	6
15 Kitsap	10.3	6
3 Lower Skagit - Samis	4.23	8
13 Deschutes	3.45	8
11 Nisqually	1.71	8
2 San Juan	0	10
4 Upper Skagit	0	10
6 Island	0	10
14 Kennedy-Goldsbgh.	0	10
16 Hood Canal	0	10



II.1.g. SSRS PRIORITIZATION - TOTAL AGRICULTURAL USE - % OF WRIA

Category	X-axis points
Favorable	10
Medium	5
Unfavorable	0

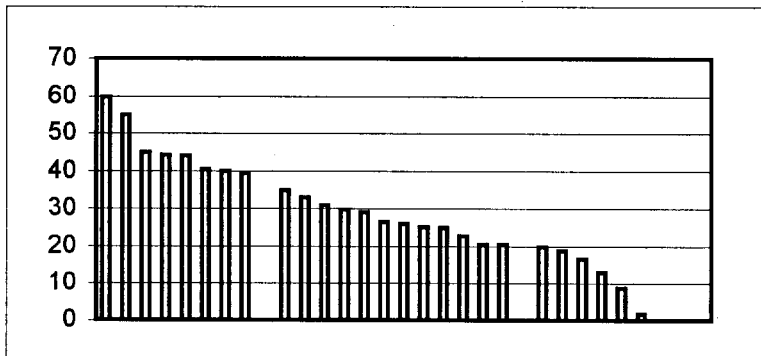
WRIA	Value	Score
3 Lower Skagit - Samish	18.8	0
28 Salmon - Washougal	14	0
1 Nooksack	13	0
23 Upper Chehalis	13	0
11 Nisqually	6.3	5
9 Duamish-Green	6.2	5
13 Deschutes	6.2	5
5 Stillaguamish	5.6	5
6 Island	5.6	5
7 Snohomish	4.4	5
2 San Juan	4.3	5
25 Grays - Eloc.	4.3	5
26 Cowlitz	4	5
18 Elwha - Dungeness	3.8	5
10 Puyallup	3.7	5
27 Lewis - Kalama	3.5	5
22 Lower Chehalis	3.3	5
12 Chambers-Clover	3	5
24 Willapa	2.6	5
29 Wind - White Sal.	2.4	5
17 Quilcene	1.7	10
14 Kennedy-Goldsbgh.	1.3	10
15 Kitsap	0.9	10
8 Cedar-Sammamish	0.7	10
19 Lyre - Hoko	0.5	10
16 Hood Canal	0.4	10
4 Upper Skagit	0.3	10
20 Sol Duc - Hoh	0.3	10
21 Queets - Quinault	0	10



II.1.h. SSRS PRIORITIZATION - TOTAL FOREST COVER - MID AND LATE SERAL STAGE %

Category	X-axis points
Favorable	10
Medium	5
Unfavorable	0

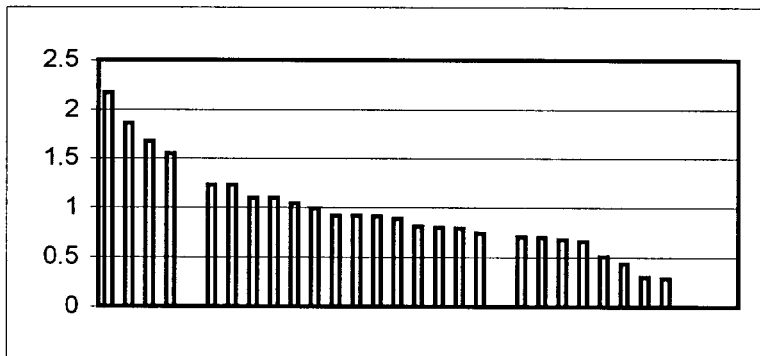
WRIA	Value	Score
16 Hood Canal	59.7	10
4 Upper Skagit	55	10
20 Sol Duc - Hoh	44.9	10
19 Lyre - Hoko	44.2	10
21 Queets - Quinault	44	10
10 Puyallup	40.39	10
15 Kitsap	40	10
18 Elwha - Dungeness	39.4	10
<hr/>		
22 Lower Chehalis	34.89	5
24 Willapa	33.01	5
17 Quilcene	30.91	5
14 Kennedy-Goldsbgh.	29.76	5
7 Snohomish	29.01	5
27 Lewis - Kalama	26.5	5
5 Stillaguamish	26	5
11 Nisqually	25.11	5
13 Deschutes	24.9	5
8 Cedar-Sammamish	22.72	5
25 Grays - Eloc.	20.566	5
9 Duamish-Green	20.47	5
<hr/>		
26 Cowlitz	19.75	0
28 Salmon - Washougal	18.856	0
23 Upper Chehalis	16.621	0
12 Chambers-Clover	12.9	0
1 Nooksack	8.67	0
3 Lower Skagit - Samis	1.63	0
2 San Juan		
6 Island		
29 Wind - White Sal.		



II.1.i. SSRS PRIORITIZATION - TOTAL STREAM GRADIENT - MILES < 4%/SQ.MILES DRAINAGE

Category	Y-axis points
Favorable	10
Medium	5
Unfavorable	0

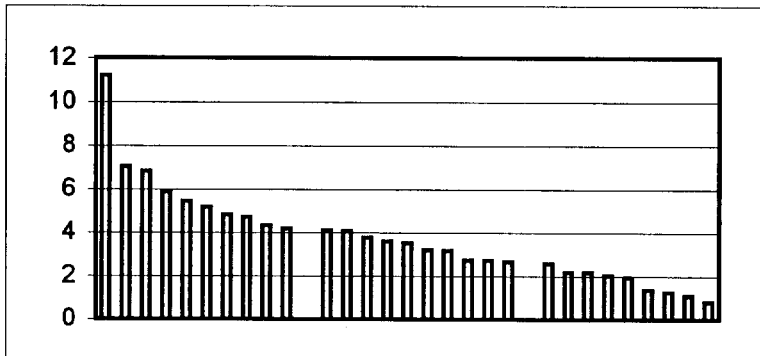
WRIA	Value	Score
24 Willapa	2.17	10
22 Lower Chehalis	1.86	10
23 Upper Chehalis	1.67	10
25 Grays - Eloc.	1.54	10
3 Lower Skagit - Samis	1.23	5
21 Queets - Quinault	1.23	5
15 Kitsap	1.1	5
20 Sol Duc - Hoh	1.1	5
14 Kennedy-Goldsbgh.	1.04	5
11 Nisqually	0.99	5
5 Stillaguamish	0.92	5
7 Snohomish	0.92	5
13 Deschutes	0.91	5
26 Cowlitz	0.89	5
1 Nooksack	0.81	5
19 Lyre - Hoko	0.8	5
28 Salmon - Washougal	0.79	5
27 Lewis - Kalama	0.74	5
8 Cedar-Sammamish	0.71	0
17 Quilcene	0.7	0
9 Duamish-Green	0.68	0
10 Puyallup	0.66	0
18 Elwha - Dungeness	0.51	0
16 Hood Canal	0.44	0
12 Chambers-Clover	0.3	0
4 Upper Skagit	0.29	0
2 San Juan		
6 Island		
29 Wind - White Sal.		



II.1.J. SSRS PRIORITIZATION - TOTAL ROAD MILES PER SQ. MILES IN WRIA

Category	X-axis points
Favorable	10
Medium	5
Unfavorable	0

WRIA	Value	Score
12 Chambers-Clover	11.21	0
8 Cedar-Sammamish	7.02	0
9 Duamish-Green	6.81	0
13 Deschutes	5.89	0
23 Upper Chehalis	5.45	0
25 Grays - Eloc.	5.19	0
11 Nisqually	4.84	0
14 Kennedy-Goldsbgh.	4.7	0
10 Puyallup	4.34	0
27 Lewis - Kalama	4.19	0
<hr/>		
26 Cowlitz	4.09	5
24 Willapa	4.07	5
15 Kitsap	3.77	5
22 Lower Chehalis	3.6	5
28 Salmon - Washougal	3.51	5
29 Wind - White Sal.	3.2	5
3 Lower Skagit - Samis	3.17	5
7 Snohomish	2.72	5
5 Stillaguamish	2.71	5
20 Sol Duc - Hoh	2.67	5
<hr/>		
17 Quilcene	2.58	10
21 Queets - Quinault	2.18	10
16 Hood Canal	2.17	10
1 Nooksack	2.01	10
19 Lyre - Hoko	1.94	10
18 Elwha - Dungeness	1.39	10
6 Island	1.26	10
4 Upper Skagit	1.08	10
2 San Juan	0.82	10



II.1.k. SSRS PRIORITIZATION - HYDROLOGIC MODIFICATION

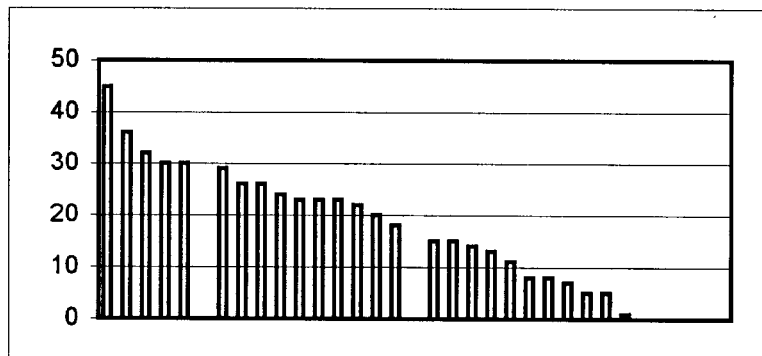
	Category	Y-axis points
	Favorable	10
	Medium	5
	Unfavorable	0

WRIA	Hydrologic Modification - Dams
1 Nooksack	10
5 Stillaguamish	10
6 Island	10
19 Lyre - Hoko	10
20 Sol Duc - Hoh	10
21 Queets - Quinault	10
22 Lower Chehalis	10
24 Willapa	10
7 Snohomish	5
2 San Juan	5
3 Lower Skagit - Samish	5
4 Upper Skagit	5
9 Duamish-Green	5
10 Puyallup	5
12 Chambers-Clover	5
13 Deschutes	5
14 Kennedy-Goldsbgh.	5
15 Kitsap	5
17 Quilcene	5
18 Elwha - Dungeness	5
23 Upper Chehalis	5
25 Grays - Eloc.	5
28 Salmon - Washougal	5
16 Hood Canal	5
8 Cedar-Sammamish	0
11 Nisqually	0
26 Cowlitz	0
27 Lewis - Kalama	0
29 Wind - White Sal.	0

II.1.I SSRS PRIORITIZATION - TOTAL BARRIER CULVERTS ON D.O.T. ROADS PER WRIA

Category	X-axis points
Favorable	10
Medium	5
Unfavorable	0

WRIA	Value	Score
20 Sol Duc - Hoh	45	0
1 Nooksack	36	0
24 Willapa	32	0
5 Stillaguamish	30	0
15 Kitsap	30	0
21 Queets - Quinault	29	5
19 Lyre - Hoko	26	5
26 Cowlitz	26	5
3 Lower Skagit - Samis	24	5
8 Cedar-Sammamish	23	5
14 Kennedy-Goldsbgh.	23	5
22 Lower Chehalis	23	5
11 Nisqually	22	5
27 Lewis - Kalama	20	5
7 Snohomish	18	5
10 Puyallup	15	10
23 Upper Chehalis	15	10
25 Grays - Eloc.	14	10
16 Hood Canal	13	10
29 Wind - White Sal.	11	10
17 Quilcene	8	10
18 Elwha - Dungeness	8	10
28 Salmon - Washougal	7	10
4 Upper Skagit	5	10
9 Duamish-Green	5	10
13 Deschutes	1	10
12 Chambers-Clover	0	10
2 San Juan		
6 Island		



II.2.a. SSRS PRIORITIZATION - TOTAL WATER AVAILABLE FOR FISH

Category	X-axis points
I - Over appropriated	0
II - No instream flow set; water available	10
III - Unknown adequacy	5
IV - No instream flow set; high pressure	0
V - No instream flow set; low pressure	10

WRIA	Score
4 Upper Skagit	10
11 Nisqually	10
14 Kennedy-Goldsbgh.	10
16 Hood Canal	10
19 Lyre - Hoko	10
20 Sol Duc - Hoh	10
21 Queets - Quinault	10
24 Willapa	10
25 Grays - Eloc.	10
29 Wind - White Sal.	10
2 San Juan	5
3 Lower Skagit - Samish	5
5 Stillaguamish	5
6 Island	5
13 Deschutes	5
22 Lower Chehalis	5
23 Upper Chehalis	5
1 Nooksack	0
7 Snohomish	0
8 Cedar-Sammamish	0
9 Duamish-Green	0
10 Puyallup	0
12 Chambers-Clover	0
15 Kitsap	0
17 Quilcene	0
18 Elwha - Dungeness	0
26 Cowlitz	0
27 Lewis - Kalama	0
28 Salmon - Washougal	0

II.3 a. SSRS PRIORITIZATION - TOTAL % PROTECTED LANDS IN WRIA

Category	X-axis points
Favorable	10
Medium	5
Unfavorable	0

WRIA	Value	Score
4 Upper Skagit	52.7	10
18 Elwha - Dungeness	44.7	10
21 Queets - Quinault	33.5	10
20 Sol Duc - Hoh	33.4	10
10 Puyallup	24.2	10
16 Hood Canal	18.6	10
7 Snohomish	18	10
1 Nooksack	16	10
26 Cowlitz	12	10
5 Stillaguamish	10.1	5
11 Nisqually	7.5	5
29 Wind - White Sal.	7	5
19 Lyre - Hoko	5.2	5
17 Quilcene	4.3	5
8 Cedar-Sammamish	2.7	5
28 Salmon - Washougal	2.7	5
27 Lewis - Kalama	2.2	5
2 San Juan	1.8	5
3 Lower Skagit - Samish	1.6	5
22 Lower Chehalis	1.3	0
6 Island	1.2	0
24 Willapa	1.1	0
9 Duamish-Green	0.7	0
13 Deschutes	0.5	0
12 Chambers-Clover	0.3	0
15 Kitsap	0.3	0
14 Kennedy-Goldsbgh.	0.2	0
23 Upper Chehalis	0.2	0
25 Grays - Eloc.	0.1	0

